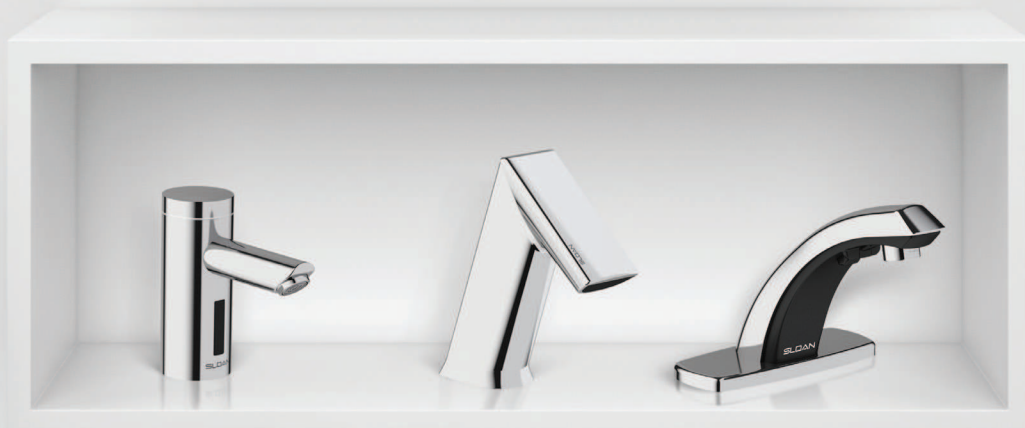


FUNCTIONAL ELEGANCE BY DESIGN

Full Line Faucet Collection



SLOAN.

DESIGN that INSPIRES

Selecting a faucet for commercial applications is no simple task. It's much more than just finding a way to get water into a basin. The faucet represents a critical point of interaction — the culmination of a positive, hygienic experience that begins with a designer or architect's vision. From an engineer's perspective, it's all about reliability, ease of installation and maintenance.

Finding the right solution involves striking a balance among many (often competing) factors:

- Application environment
- Aesthetics
- Expected traffic volume
- Efficiency/sustainability
- Initial and lifetime cost of ownership
- Ease of maintenance

As the pioneer in commercial sensor faucet development, Sloan has created the most comprehensive line of electronic sensor faucets for the widest array of applications. With more styles, designs and options than any other manufacturer in the business, building owners, designers, architects and engineers alike can find the perfect solution to meet all their creative, practical and sustainability needs while staying within budget.

We offer three distinctive lines of sensor faucets:

BASYS® A groundbreaking design with multiple body types, sensing technologies, interchangeable components and power choices

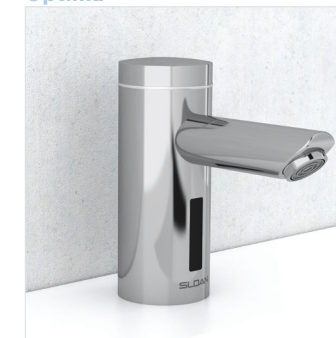
Optima® Reliable and built to last. The world's most widely installed sensor faucets with many styles and features

Sloan® Dependable products for cost-driven applications

BASYS®



Optima®



Sloan®



Sloan is the leader in smart, sustainable design for the total commercial restroom. The sensor faucets you'll find on the following pages are the perfect complement for our sinks, flushometers, water closets, urinals and more.

A WORLD OF OPTIONS



BASYS®

Any application.
Any environment.

Backed by a century of experience and proven Sloan technologies, BASYS delivers a revolutionary approach to sensor faucets that meets the demands of the commercial plumbing industry. Introduced after two years of field research and in-depth interviews with designers, architects, engineers and plumbers, BASYS has the strength and versatility to meet the needs of any application or environment.

- A single tool provides access to all components.
- Interchangeability of components simplifies upgrades, repairs and maintenance.
- One twist of the solenoid caddy shuts off water supply for maintenance.
- Multiple power harvesting options are available to suit the unique needs of each environment.
- Individual external diagnostic LEDs indicate the health and status of key components.
- All models include a line flush function to reduce the stagnant water that can lead to bacterial growth.
- With a touch, staff can temporarily turn off the water supply in order to clean the sink area without activating water flow.

BASYS is centered on a robust system of shared features and components. This fundamentally different approach revolutionized the commercial plumbing industry by streamlining service and advancing the user experience.

ABOVE-DECK CONTROLS

Easy, above-deck access to key components is the standard for all BASYS models. The on-board electronics are completely sealed within each faucet's modular crown, which can be removed with a single Allen wrench.

Valve caddy/water shut-off

Shuts off water supply with one twist, without having to go below the sink.

Removable crown

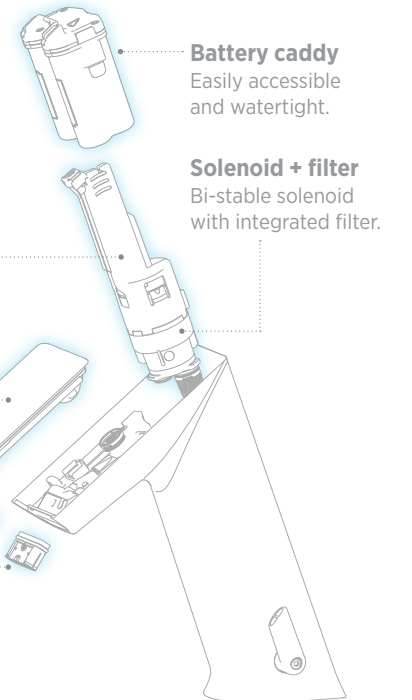
Upgrade product features in seconds.

External indicators

Individual external diagnostic LEDs help quickly identify faucet status.

Exchange tool + spray insert

Allows operators to remove, clean and replace the spray.



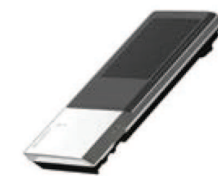
INTERCHANGEABLE CROWNS

Interchangeable crowns help tailor a product to fit the unique needs of a particular installation.



Bowed

A clean, bowed crown is the standard for all models. It provides a smooth, sleek appearance.



Solar

Solar panels embedded in the crown draw power from artificial and natural light sources.



Solar + LCD display

The LCD display instructs users how to perform a CDC-compliant hand wash.

FLOW RATES AND SPRAY TYPES

Three spray types provide options to adjust the flow rate, look and feel of the water.



Multi-laminar spray
0.5 gpm/1.9 Lpm



Full-stream aerated
1.5 gpm/5.7 Lpm



Full-stream laminar
1.5 gpm/5.7 Lpm

MORE
OPTIONS

POWER OPTIONS

Four power options are available, giving you the flexibility to best meet your specific application needs.



HARDWIRED



BATTERY



SOLAR



TURBINE

Hardwired Ideal for new construction because it eliminates regular use of disposable batteries. All BASYS hardwired faucets have backup battery power.

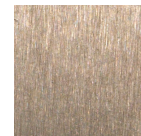
Battery A good option for retrofit environments or installations where hardwiring is not an option.

Solar An excellent choice to passively harvest power and extend battery life.

Turbine Miniaturized hydroelectric turbines extract power from moving water and use it to extend battery life.

SPECIAL FINISHES

In addition to our polished chrome finish, our BASYS line can be ordered with special finishes:



Brushed nickel



Polished brass



Brushed stainless



Chrome

CUSTOM ENGRAVING

Add a distinctive touch to your faucets with custom engraving. Corporate logos, team or venue names — the possibilities are limitless.



COMPLIANCE

- Americans with Disabilities Act (ADA)
- California Energy Commission (CEC)
- Buy American Act (BAA) (select models only)
- CalGreen Code
- NSF 372

Low-height



EFX300 Hardwired
EFX350 Battery
EFX375 Battery + solar
EFX377 Battery + solar + LCD
EFX380 Battery + turbine

Low-height with integrated base



EFX600 Hardwired
EFX650 Battery
EFX675 Battery + solar
EFX677 Battery + solar + LCD
EFX680 Battery + turbine

Mid-height



EFX200 Hardwired
EFX250 Battery
EFX275 Battery + solar
EFX277 Battery + solar + LCD
EFX280 Battery + turbine

High



EFX100 Hardwired
EFX150 Battery
EFX175 Battery + solar
EFX177 Battery + solar + LCD
EFX180 Battery + turbine

Wall-mount



EFX800 Hardwired
EFX850 Battery
EFX875 Battery + solar
EFX877 Battery + solar + LCD



Technological advances like the turbine-powered faucet make BASYS unique.

Matching soap dispensers and hand dryers are available.
Contact Sloan for more information.



Optima®

A sense of style
for any application.

If you see a sensor faucet in a commercial setting, odds are it's a Sloan Optima model. With a well-deserved reputation for reliability and proven engineering expertise — and a wide range of design and feature options — it's no wonder Optima is the most widely installed commercial sensor faucet in the world.

Whether specifications call for battery or AC power, Optima's hygienic, touch-free electronic operation delivers a positively purifying experience in any environment. From hardworking, vandal-resistant models that stand up to the harshest conditions, to elegant and refined executive options with lighted rainfall water streams, you'll find an Optima faucet that fits your requirements perfectly.

OPTIONS

Optima sensor faucets can be specified with a range of options and styles to meet any application requirements.

POWER OPTIONS



HARDWIRED



BATTERY



SOLAR

Hardwired Ideal for new construction because it eliminates regular use of disposable batteries.

Battery A good option for retrofit environments or installations where hardwiring is not an option.

Solar An excellent choice to passively harvest power and extend battery life.

FLOW RATES

0.35 gpm/1.325 Lpm | 0.5 gpm/1.9 Lpm | 1.0 gpm/3.8 Lpm | 1.5 gpm/5.7 Lpm | 2.2 gpm/8.3 Lpm

SPECIAL FINISHES

In addition to our polished chrome finish, select models in the Optima series can be ordered with special finishes:



Brushed nickel



Polished brass



Brushed stainless



Chrome

COMPLIANCE

- Americans with Disabilities Act (ADA)
- California Energy Commission (CEC)
- CalGreen Code
- NSF 372
- LEED v4 (with 0.35 gpm spray option)
- Buy American Act (BAA) (select models only)

Mid-height above-deck controls



EAF100 Hardwired
EAF150 Battery



EAF200 Hardwired
EAF250 Battery
EAF275 Battery and solar energy



EAF350 Battery

High gooseneck below-deck controls



ETF700 Hardwired
EBF750 Battery
EBF755 Battery, BAA compliance



ETF700-H Hardwired with surgical bend
EBF750-H Battery with surgical bend



ETF770 Hardwired with side sensor

Mid- and low-height below-deck controls



ETF80 Mid-height, hardwired
EBF85 Mid-height, battery



ETF880 Mid-height, hardwired
EBF187 Mid-height, battery



ETF660 Low-height, hardwired with side sensor

Wall-mount below-deck controls



ETF500 Hardwired
EBF550 Battery



ETF800 Hardwired



High gooseneck surgical bend perfect for use in healthcare settings

Executive



EAF700 Above-deck controls, hardwired
EAF750 Above-deck controls, battery



EAF225 Below-deck controls, hardwired with illuminated temperature indicator



EAF900 Below-deck controls, hardwired with backlight stream and illuminated temperature controls



Stylish design with reliable and hygienic functionality



ETF610 Low-height, hardwired
EBF615 Low-height, battery
EBF625 Low-height, battery, BAA compliance



ETF600 Low-height, hardwired
EBF650 Low-height, battery
EBF655 Low-height, battery, BAA compliance

Soap dispenser pairings available for many models.
Contact Sloan for more information.



Sloan®

Dependable performance for cost-driven applications.

Working within a strict budget doesn't have to mean sacrificing style, performance or ease of maintenance. The rugged and dependable SF-Series delivers the same reliability and ease of installation that has made Sloan a leader in commercial restroom applications.

You get all the convenience and hygienic advantages of touch-free sensor activation for tempered or hot/cold water delivery with a choice of faucet heights and styles with below-deck controls.

POWER OPTIONS

Hardwired Ideal for new construction because it eliminates regular use of disposable batteries.

Battery A good option for retrofit environments or installations where hardwiring is not an option.



FLOW RATES

0.35 gpm/1.325 Lpm | 0.5 gpm/1.9 Lpm | 1.5 gpm/5.7 Lpm | 2.2 gpm/8.3 Lpm

COMPLIANCE

- Americans with Disabilities Act (ADA)
- California Energy Commission (CEC)
- CalGreen Code
- LEED v4 (with 0.35 gpm spray option)

Low-height



SF2100 Hardwired
SF2150 Battery

Mid-height



SF2400 Hardwired
SF2450 Battery

Mid-height with integrated base



SF2300 Hardwired
SF2350 Battery

Gooseneck



SF2200 Hardwired
SF2250 Battery



Sloan sensor faucets are perfect for food service applications where hygiene is critical.

Soap dispenser pairings available for select models.
Contact Sloan for more information.

THE SLOAN FULL LINE FAUCET COLLECTION

No matter what your application requirements, you'll find a Sloan sensor faucet that meets those needs with style. Create a positive, hygienic experience for your commercial facility today. **Call 800.982.5839 or visit sloan.com to learn more.**

No matter what your application requirements, you'll find a Sloan sensor faucet that meets those needs with style. Create a positive, hygienic experience for your commercial facility today. Call 800.982.5839 or visit sloan.com to learn more.		FEATURES														
		Spout Type						Sensor Type		Service Access		Functions				
LINE		Low	Mid	High	Integrated Base	Gooseneck	Wall	Infrared	Capacitance/Proximity	Above Deck	Below Deck	Auto Shut-Off	Configurable	Programmable	LCD Screen Option	Line Flush
BASYS	EFX100, EFX150, EFX175, EFX177, EFX180			●				●		●		●	●	●	●	●
	EFX200, EFX250, EFX275, EFX277, EFX280		●					●		●		●	●	●	●	●
	EFX375, EFX377	●						●		●		●	●	●	●	●
	EFX300, EFX350, EFX380	●						●	●		●	●	●	●		●
	EFX675, EFX677				●			●		●		●	●	●	●	●
	EFX600, EFX650, EFX680				●			●	●		●	●	●	●		●
	EFX800, EFX850, EFX875, EFX877						●	●		●		●	●	●	●	●
OPTIMA	EAF100, EAF150		●					●		●				●		
	EAF200, EAF250, EAF275		●					●		●				●		
	EAF225		●					●			●			●		
	EAF350		●					●		●				●		
	EAF700, EAF750					●		●		●				●		
	EAF900		●					●			●					
	ETF80, EBF85, ETF880, ETF187		●					●			●					
	ETF500, EBF550					●	●	●			●					
	ETF610, EBF615, EBF625	●						●			●					
	ETF600, EBF650, EBF655				●			●			●					
	ETF700, EBF750, EBF755					●		●			●					
	ETF660	●						●			●					
	ETF770					●		●			●					
	ETF800						●	●			●					
	SLOAN	SF2100, SF2150	●						●			●				
SF2200, SF2250						●		●			●					
SF2300, SF2350					●			●			●					
SF2400, SF2450			●					●			●					

* May require purchase of separate sprayhead

***Some not available in all flow rates*

Options																						Codes														
Power				Finishes				Flow Rates*					Spray Types**				Trim Plate	Temperature Mixing				Compliance														
Hardwired								0.35 gpm/1.325 Lpm		0.5 gpm/1.9 Lpm		1.0 gpm/3.8 Lpm		1.5 gpm/5.7 Lpm		2.2 gpm/8.3 Lpm	Multi-Laminar					4" or 8"	Bak-Chek Tee		Integrated Side Mix		Above-Deck Handle		Below-Deck Manual or Thermostatic	ADA, CalGreen and CEC		BAA		LEED v4		

DEFINING THE STATE OF THE ART FOR MORE THAN 110 YEARS

Full Line Flushometer Collection





The Evolution of TIMELESS ENGINEERING



In 1906, William Elvis Sloan changed the world of commercial plumbing with an innovative valve that replaced the tank-and-chain configurations commonly used on toilets of the day. Rather than relying on gravity, the Royal® Flushometer used water pressure to get the job done with greater consistency and used less water in the process.

Today, Sloan flushometers are the go-to choice for architects, designers, engineers and building owners looking for quality, reliability and options in a wide array of commercial and industrial restroom applications. No other manufacturer can match our experience, dedication or commitment to the market.

Sloan is the leader in smart, sustainable design for the total commercial restroom. The wide range of flushometers you'll find on the following pages represents the latest in hydromechanical and electronic design. They are the perfect complement for our water closets, urinals, sensor faucets, sinks and more.

A world of options

No matter what your application might be, Sloan has a line of flushometers with the features and options to fit your needs. And no matter which solution you choose, you get much more than just a flush valve:

- More than 110 years of engineering experience to optimize performance and water savings
- Design and manufacturing in the U.S. by dedicated Sloan professionals with top-quality materials and components, including semi-red brass
- Outstanding technical support with the skills and knowledge to assist with any situation

The broadest offering in the industry

No matter what your application, Sloan has a solution that delivers the performance you need.

- Manual and sensor operation
- Diaphragm and piston models
- Exposed and concealed installation
- Battery, solar and hardwired sensors
- Specialty needs
 - Hydraulic-actuated
 - Prison
 - Programmed Water Technology (PWT)
 - Bed pan washers
 - Special finishes

ROYAL® 111



SOLIS® 8111



ROYAL® 152 ESS TMO SWB





When it all comes together

One of the advantages to designing and manufacturing both flushometers and vitreous china fixtures is the ability to offer them as pre-matched combinations.

Our combination offerings give you a quick and easy way to match Sloan quality and performance in one easy-to-install package.

- A single source for all your specification needs
- The same great after-sale support you have come to expect
- All combination packages are compliant with the Buy American Act (BAA)



FINDING THE RIGHT SOLUTION

Choosing the right flushometer is critical to creating a consistent and hygienic user experience, and it requires a careful analysis of several key factors:

- Expected traffic
- Water pressure
- Water quality
- User experience
- Budget

The broadest range of product lines and options in the industry from the name that started it all—Sloan.



ROYAL®



UPPERCUT®



SLOAN®



REGAL®



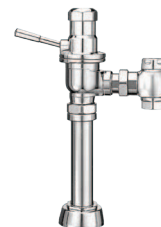
CROWN®



GEM-2®



NAVAL®



DOLPHIN®



G2



ECOS®



SOLIS®



TRUFLUSH



Top mount

Sloan's innovative top-mount sensor flushometers provide a sleek, distinctive appearance while delivering a hygienic, hands-free experience for users. Engineered for maximum durability and service life.

Side mount

These side-mount sensors (except SMO) include True Mechanical Override (TMO)—ensuring the ability to flush if batteries fail—and they can be specified on many of our industry-leading flushometers, including Royal®, Sloan®, Regal® and Crown®.

Concealed

Concealed sensor flushometers provide a clean look and help prevent tampering/vandalism.

Top Mount



SOLIS®

SOLIS flushometers extend battery life by using solar panels to capture and store power from indoor lighting. Single and dual flush options available.



G2

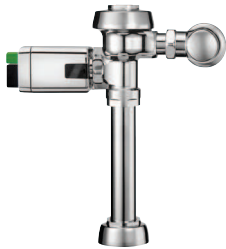
G2 flushometers feature new electronics that deliver six years of battery life with standard AA alkaline batteries.



ECOS®

ECOS features G2 reliability plus increased water conservation. High efficiency with single flush or dual flush options available.

Side Mount



DFS

The Dual Flush Side Mount provides an automatic reduced flush based on time. True Mechanical Override button ensures the toilet can always be flushed.



SFS

The Single Flush Side Mount features a True Mechanical Override button that ensures the toilet can always be flushed.



SMOOTH®

The SMOOTH flushometer fits right over the existing flushometer handle. It features a True Mechanical Override button that ensures the fixture can always be flushed.

Side Mount



SMO

A compact design and dependable performance make the SMO battery-powered flushometer a popular choice.

Note: ECOS, DFS, SFS, SMOOTH, and TruFlush lines are also available in hardwired models

Concealed



TRUFLUSH

With Sloan's patent-pending piston technology, TruFlush flushometers feature a clean, concealed design with front access for maintenance. Not available in USA or Canada.



SOLIS®

The concealed SOLIS flushometers protect the sensor and photovoltaic components behind a stainless steel wall plate that includes the True Mechanical Override button.



ESS exposed and concealed

Sloan's electronic solenoid sensor (ESS) flushometers provide the ultimate in sanitary protection and automatic operation. The flushometer operates by means of an infrared sensor that adapts to its surroundings. Once the user enters the sensor's effective range and then steps away, the flushometer solenoid initiates the flushing cycle.

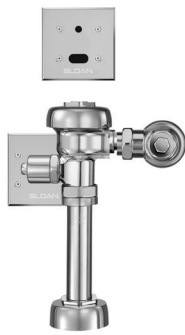
Wall plates and wall boxes

For concealed flushometer installations with rear access, Sloan offers small, attractive wall plates. For installations with no access from behind, Sloan offers wall boxes that protect the flushometer components while offering secure front access for maintenance or repair.

Exposed



ROYAL®



REGAL®



SLOAN®



CROWN®

Concealed



ROYAL®



REGAL®



SLOAN®



CROWN®

Note: TruFlush models on page 7 can also be hardwired

Wall Plates



ROYAL® ESS



REGAL®/SLOAN® ESS



ESS SWB



ESS WB

Wall Boxes



Diaphragm

The preferred technology in the U.S., diaphragm flushometers are especially beneficial in high-traffic environments or where water quality is less than ideal. They provide long-lasting, dependable performance.

Piston

Sloan patented the first piston flushometer back in the 1930s, and we've been refining and improving the technology ever since. Piston flushometers are especially popular in low-pressure environments.

Diaphragm



ROYAL®

Royal flushometers feature advanced materials including dual-filtered fixed bypass synthetic rubber diaphragms and semi-red brass body, stop and cover.



SLOAN®

Sloan flushometers feature semi-red brass and highly chloramine-resistant Permex® synthetic rubber diaphragm with filtered bypass and vortex cleansing action.



REGAL®

Economical Regal flushometers feature semi-red brass and a durable natural rubber diaphragm.

Diaphragm



UPPERCUT®

The UPPERCUT dual-flush flushometer provides a reduced flush option that reduces water usage by 30 percent. Features semi-red brass and Royal dual-filtered fixed bypass synthetic rubber diaphragm.



CROWN®

Crown flushometers feature advanced piston technology. Water-efficient design will not accept higher flush volume replacement parts.



GEM-2®

Reliable and economical, GEM-2 piston flushometers have been an international favorite for decades.

Piston



NAVAL®

The Naval piston flushometer is designed specifically for harsh water conditions. Highest quality Naval brass and its exclusive Expelor® bypass provide superior harsh water performance.



DOLPHIN®

Dolphin piston flushometers reliably stand up to the demands of saltwater and other severe water conditions and use Naval brass.



TRUFLUSH

With Sloan's patent-pending piston technology, TruFlush flushometers feature a clean, concealed design with front access for easy maintenance. Not available in USA or Canada.



Specialty

When specifications call for features or functions beyond a standard commercial restroom, Sloan has the situation covered. Sloan has the broadest offering of specialty flushometers in the industry.



HYDRAULIC FLUSHOMETERS

Sloan hydraulic flushometers feature a push-button actuator that uses line water pressure to actuate the valve, and it can be located remotely from the valve itself, making these ideal for difficult installations.



PRISON FLUSHOMETERS

With concealed valves and rugged, non-hold-open push-buttons, Sloan prison flushometers are at home in the toughest conditions.



PWT®

Programmed water technology (PWT) allows you to effortlessly oversee and manage your facility's water flow. PWT flushometers provide electronic operation suitable for prisons and other institutions.



BEDPAN WASHERS

Sloan Slimline® bedpan washers provide hygienic solutions to in-room water closets. Manual, sensor-activated and hydraulic options are offered with features including ADA offset flush connections and deoseptic units.

Special Finishes

In addition to our polished chrome finish, our Royal® manual, G2, ECOS® and SOLIS® battery-operated sensor, and Royal Optima® ESS hardwired sensor flushometers can be ordered with special finishes.



Polished
Chrome



Polished
Brass



Brushed
Nickel



Brushed
Stainless



Retrofits

Sloan's industry-leading sensor and manual technologies are available as retrofit kits for existing manual flushometers. It's never been easier for building owners, engineers and facility managers to create a hygienic, hands-free experience.

Top-mount Sensor



G2
Battery-operated
single flush models.



ECOS®
Battery-operated high-efficiency
single and dual flush models.



SOLIS®
Solar-powered single
and dual flush models.

Side-mount Sensor



DFSM
Dual Flush Side
Mount with TMO.



SFSM
Single Flush Side
Mount with TMO.



SMOOTH®
Over-the-handle
installation with TMO.



SMO
Single Flush
Side Mount.

Manual



UPPERCUT®
Dual flush manual
retrofit handles.

Customizing your solution

With so many different flushometer types, sensors and options, it would be impossible to list every combination in a single brochure.

In most cases, product names conform to the following structure: Name | Model | Flush Volume | Suffix(es).

Example: Royal 111-1.28 ESS
This combination is a Royal 111 flushometer with a 1.28 gpf (4.8 Lpf) flush volume and an electronic solenoid sensor.

In the charts below, you'll find a list of common model specifications that includes rough-in dimensions and connection sizes. Unless otherwise specified, most flushometers are available in multiple flush volumes.



	WATER CLOSET	URINAL
Water Saver	3.5 gpf/13.2 Lpf	1.5 gpf/5.7 Lpf
Low Consumption	1.6 gpf/6.0 Lpf	1.0 gpf/3.8 Lpf
High Efficiency	1.6/1.1 gpf/6.0/4.2 Lpf 1.28 gpf/4.8 Lpf 1.1 gpf/4.2 Lpf	0.5 gpf/1.9 Lpf 0.25 gpf/0.9 Lpf 0.125 gpf/0.5 Lpf

Selected Suffixes Used in Product Names	
SUFFIX	DESCRIPTION
SFSM	Single Flush Side Mount sensor
DFSM	Dual Flush Side Mount sensor
SMO	Side mount operator sensor
SMOOTH	SMOOTH sensor
ESS	Electronic solenoid sensor
HW	Hardwired
WB	Wall box
SWB	Small wall box
H	Handle on front of valve
ES	Electronic solenoid
TMO	True Mechanical Override
OR	Override button
SG	Sani guard
TP	Trap primer

- 300 series = Foot pedal flushometers
- 600 series = Prison flushometers
- 900 series = Hydraulic flushometers
- 1000 series = Bed pan washer manual flushometers
- 8000 series = Battery-operated flushometers
- 9000 series = Bed pan washer hydraulic flushometers

PRODUCT SERIES	ROUGH IN	FIXTURE		
		Water Closet	Urinal	Service Sinks
110*, 910*, 8110*	11½"	•		
111, 8111	11½"	•		
112, 8112	11½"	•		
113, 8113	16"	•		
114	34¾"	•		
115, 8115	24"	•		
116, 8116	27"	•		
117	24"			•
120, 920	11½"	•		
121	16"	•		
122	24"	•		
136	36"	•		
137, 8137	36"	•		
139**, 939	37½"	•		
140, 940	14½"	•		
142, 942	9"	•		
143, 943	14½"	•		
144	10½"	•		
150, 650, 950	N/A	•		
152**, 952, 8152	24"	•		
153**, 953	24"	•		
154	24"	•		
155	24"			•
180, 980, 8180	11½"		•	
186, 986, 8186	11½"		•	
188	11½"		•	
190, 990	14½"		•	
192, 992	14½"		•	
195, 995, 8195	13½"		•	
197, 997	13½"		•	
310	10"	•		
312	10"	•		
313	14"	•		
318	14"	•		
320	10"		•	
323	13"		•	
343	14"	•		
601	20½"	•		
603, 9603	16"	•		
609, 9609	14½"		•	
611, 9611	24"	•		
613, 9613	13½"		•	
681	26"	•		
1000, 1010	34¾"	•		
1015	34¾"	•		
1020	34¾"	•		
1040	33¼"	•		
1045	33¼"	•		
1100, 1110, 1150	26½"	•		
1105	26½"	•		
8000, 8100	34¾"	•		
8005	34¾"	•		
9000	26½"	•		

*3.5gpf/13.2 Lpf only **ESS rough in dimensions different, see spec sheet for details

Sloan is the leader in smart, sustainable design for the total commercial restroom. Contact your Sloan representative today to learn how our complete line of flushometers, water closets, urinals, sensor faucets, sinks and more can deliver a distinctive sense of functional elegance for your next project.



SLOAN
Water Connects Us®

©2016 Sloan Valve Company. All Rights Reserved.

AGROW
CORPORATION
SINCE 1981

MALAYSIA DISTRIBUTOR
AGROW CORPORATION SDN. BHD.

WISMA KING KOIL, 2B-1, JALAN SS 6/6
KELANA JAYA, 47301 SELANGOR
+603 7805 4748 / ENQUIRY@AGROW.COM.MY
WWW.AGROW.COM.MY / A MEMBER OF OCB BERHAD